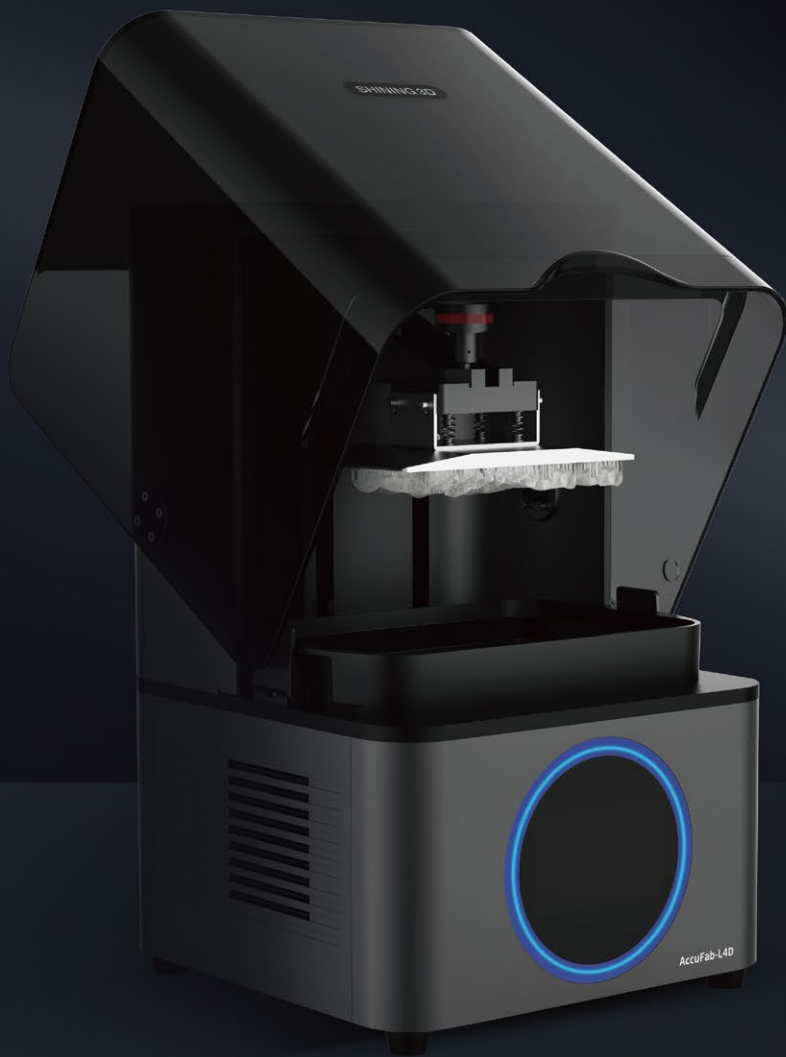


# AccuFab-L4D Dental 3D Printer

Small Size Strong Heart



Go Digital with SHINING 3D



## AccuFab-L4D

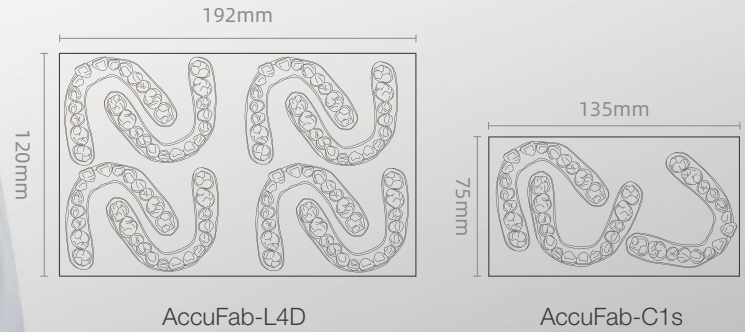
### For larger print sizes

AccuFab-L4D - the latest dental 3D printer by Shining 3D - features a larger build volume in order to increase the print size and to popularize digital diagnosis and production process. Its characteristic black&grey tone with a ring shaped color-changing light will catch your eyes.

AccuFab-L4D makes the user experience unique thanks to its light weight, large printing size and simple, user-friendly operation features.



## Compare Print Size



### Large Print Size

192\*120mm print size and 4K resolution meet efficiency and detail for users.



### Low Investment

With only 19 kg compared with other 3D printers in the market, this light weight and cost efficient printer will help customers evolve into a digital workflow.



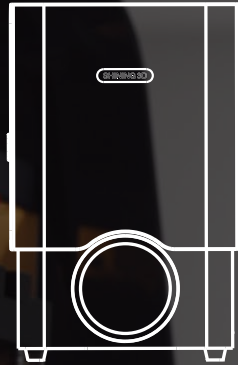
### Easy to operate

AccuWare - the printing software fully developed in-house - will assist beginners through the printing process for an easy and convenient operation.



### Numerous Material option

SHINING 3D DENT supplies a wide range of materials for dental printing, like dental model, ortho model, surgical guide, cast wax and gingiva mask.



## More Imagination

## More Coverage

AccuFab-L4D supports various dental applications, like dental model, orthodontic model, surgical guide, individual tray, and gingiva mask. It improves denture productivity, which can help achieve one-time diagnosis and high-efficient treatment.

# Light Weight & Easy To Use

In order to popularize digital diagnosis and production process, AccuFab-L4D incorporates a number of people-oriented designs, from typesetting and slicing to equipment maintenance and operation. The ease of use makes it the perfect match for first-users; even beginners will enjoy its easy printing process.



## Directing Software Operation

Only 5 steps: setting-open file-layout-support-slice.



## Sub-pixel interpolation

Independent R&D technology and high printing quality.



## 200% Optical Efficiency

Optimized optical path design, it only takes 25 minutes for a full-page of 8 orthodontics model with the fastest configuration.



## Scan-Edit-Print

Direct connection between the intraoral scanner and 3D printer with simple editing.



## Layer Preview

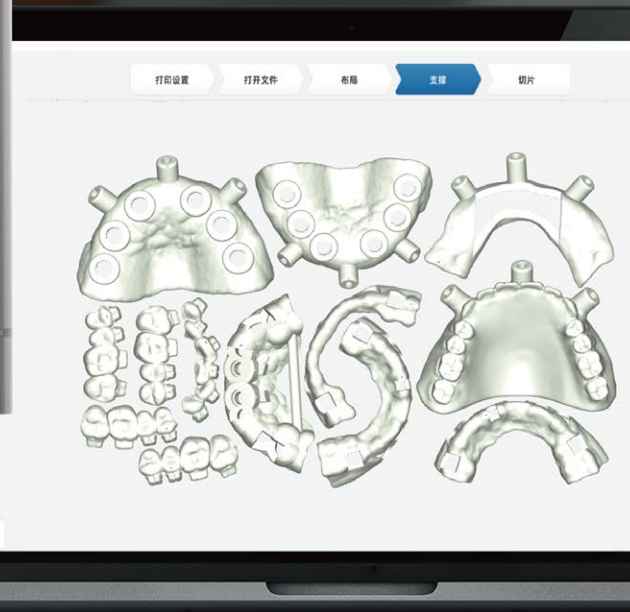
Preview slice data in advance for successful printing.



## Automatic Accuracy Calibration

Support automatic calibration to ensure stable and consistent printing.



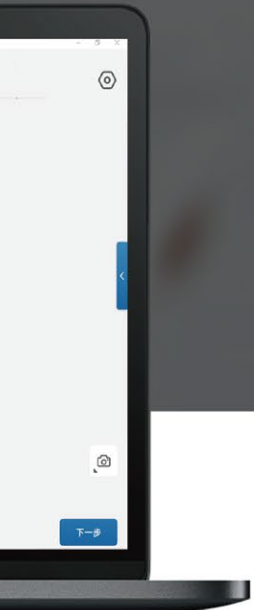




# SHINING DENT

## Numerous Certified Materials

SHINING DENT is a resin material independently developed by Shining3d and registered for medical devices. It supports multiple 3D printing applications, such as dental model, orthodontic model, individual tray, surgical guide and gingiva mask. SHINING DENT provides a cost-effective solution for users.



# AccuFab-L4D

## Technical Specifications

Equipment Size	360 x 360 x 530 mm
Weight	≈19 kg
Print Size (X/Y/Z)	192 x 120 x 180 mm
Resolution	3840 x 2400 Px
Speed	10-50 mm/h (depends on layer thickness and materials)
Layer Thickness	0.025/0.05/0.075/0.1 mm
Accuracy	± 50 μm
Connection	USB/Wi-Fi/Ethernet

\*Shining 3D reserves the right of final interpretation and modification of all contents of the text

